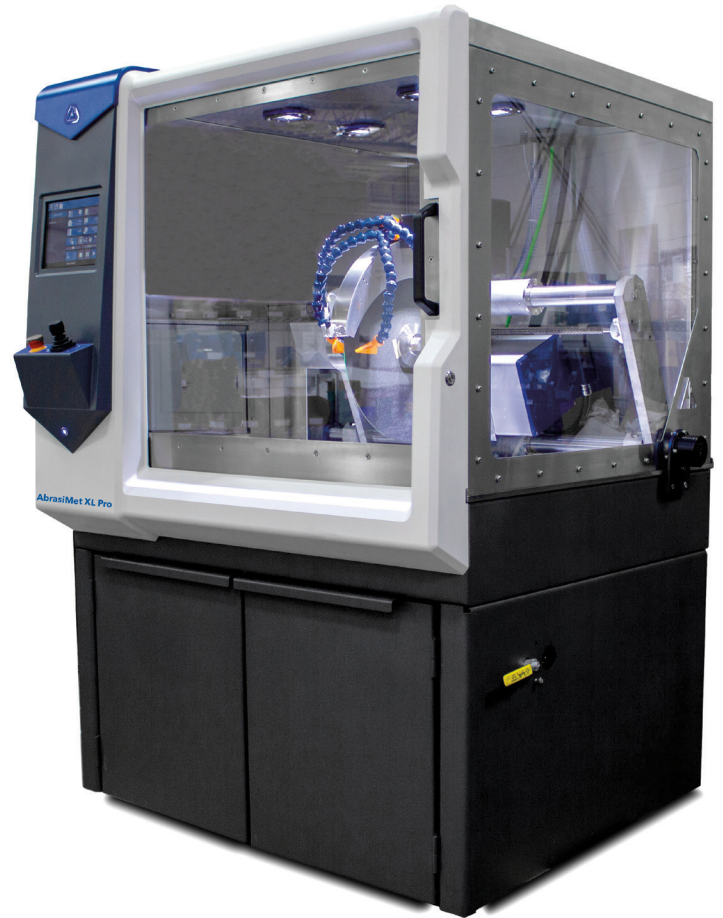


# Ensure LargeSample Cut Consistency

The **AbrasiMet™ XL Pro** provides consistent and repeatable cut quality for larger diameter samples with programmable methods and automatic cutting. A robust design, intuitive user interface and optimized chamber are ideal for cutting large samples in demanding environments.

## Ordering Information

Part Number	Description
10-2320-400	AbrasiMet XL Pro
10-2343-400	Mist Extractor
10-3547	Large Speed Clamping Vise (R)
10-3546	Large Speed Clamping Vise (L)
10-3543	Large Sliding Vise Kit (R)
10-3542	Large Sliding Vise Kit (L)
10-3523	Large Vertical Clamping Kit
10-3528	Large Riser Blocks
10-3527	Vee Block Clamp Kit
10-6010	Cool 3 (2.6gal, 10L)



## Technical Specifications

	AbrasiMet XL Pro		
Operation	Automatic, Manual		
Motor Power	13.4Hp [10kW]		
Main Power	380-480VAC, 3 Phase, 50/60Hz		
Main Current	25amp @ 460VAC		
Blade Movement Axis	Horizontal, Linear, Vertical (X, Y, Z)		
T-Slot Table Dimensions	19.9in x 11.8in [505mm x 300mm]		
Blade Sizes	14in [356mm]	16in [406mm]	18in [457mm]
Blade Table Clearance	9.71in [247mm]	8.71in [221mm]	7.71in [196mm]
Cut Capacity	5in [127mm]	6in [152mm]	7in [178mm]
Blade Speed	2100rpm	1900rpm	1860rpm

	AbrasiMet XL Pro
Cut Type	Chop, Y-Feed, Planar
Lighting	4 LEDs
Laser	Green Laser (520nm, Class 2)
Max Sample Width	Up to 49in [1245mm]
Machine Dimensions	Width: 54in [1372mm] Depth: 50.7in [1288mm] Height: 75in [1905mm]
Recirculation /Filtration Tank Capacity	45 gal [170L]
Safety Features	Interlock Hood Switch Emergency Stop 2 Hand Operation for Blade Movement (Open Door) Smart Cut™
Compliance	CE Directives



**BUEHLER Worldwide Headquarters**  
 North America-South America Offices  
 41 Waukegan Road  
 Lake Bluff, Illinois 60044-1699 USA  
 P: 800 BUEHLER (800-283-4537)  
 P: (847) 295-6500  
[www.buehler.com](http://www.buehler.com) | [info@buehler.com](mailto:info@buehler.com)

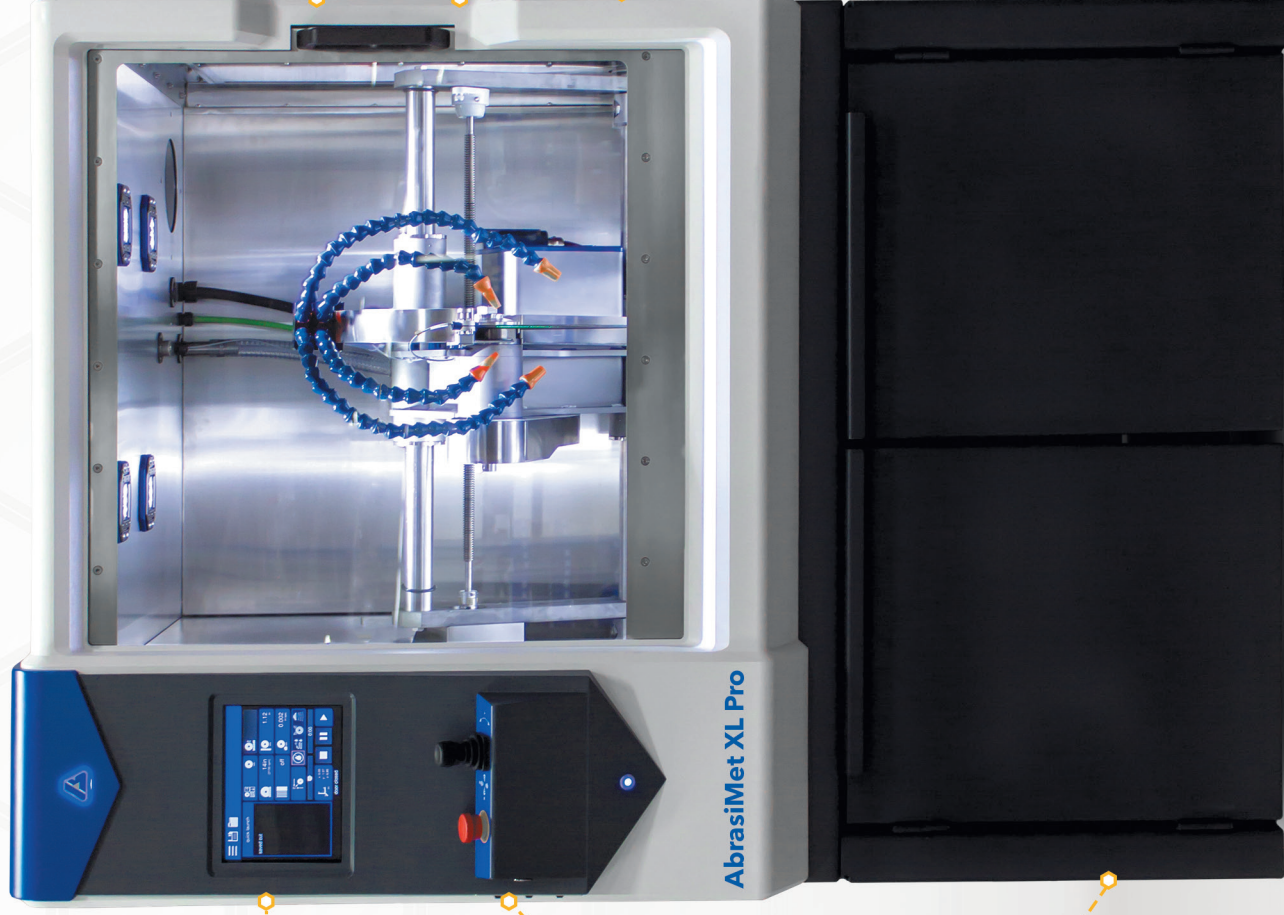
**European Headquarters**  
 BUEHLER Germany  
[info.eu@buehler.com](mailto:info.eu@buehler.com)  
 BUEHLER France  
[info.eu@buehler.com](mailto:info.eu@buehler.com)  
 BUEHLER United Kingdom  
[info.eu@buehler.com](mailto:info.eu@buehler.com)

**Asian Headquarters**  
 BUEHLER China  
[info.cn@buehler.com](mailto:info.cn@buehler.com)  
 BUEHLER Japan  
[info.japan@buehler.com](mailto:info.japan@buehler.com)  
 BUEHLER Asia-Pacific  
[info.asia@buehler.com](mailto:info.asia@buehler.com)



# AbrasiMet™ XL Pro

Advanced Automatic Cutter



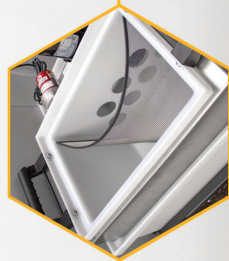
## Advanced Programming

Intuitive user interface with the ability to create and save multiple sectioning programs



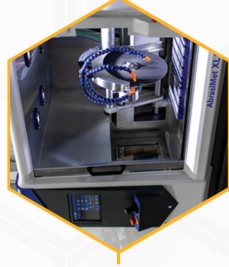
## Single Joystick for Movement

Simplified controls for the movement of the cutting arm and t-slot table to quickly set up each cut



## Built in Filtration

Simplifies the task of cleaning the recirculation tank without the need to constantly change out coolant and without the use of consumable filters



## Open Door Blade Adjustment

Provides the ability to safely move the blade and t-slot table when the door is open with the use of the safety button



## Change Blades Easily

Self tightening lock nut eliminates the need and hassle of tools when changing blades



## 3 Axis Movement

Provides flexibility and full range blade positioning thus allowing for cutting of a variety of sample shapes and sizes

*Intuitive. Robust. Powerful.*



*Strong Partner, Reliable Solutions*